

SH-1010



### FIVE FUNCTION ELECTRIC ICU BED

#### STD. configuration :-

- Advanced medical motor system (4 pcs. motor, 1 pc control box, 1 pc hand set)
- 60 mm x 30 mm CRCA tubular frame work
- ABS/ Polymer base top (Set of 10 pieces)
- ABS/ Polymer moulded head and foot board with buffer on four corner
- ABS/ Polymer moulded split type side railings (Set of 4)
- Four heavy duty swivel castors of 125 mm diameter (Diagonal wheels with brake)

#### Optional Accessories :-

- 1) Four section PU foam mattress
- 2) Food table
- 3) Central locking wheel set

- Pretreated and epoxy powder coated
- Urine bag holder
- Stainless steel telescopic saline attachment with four way hooks
- Quick fold down system (CPR)
- Backup power system (UPS)
- Attendant control panel (ACP) with patient handset

#### Overall Size :-

2240 mm L x 1080 mm W x Height adjustable from 535 mm to 890 mm

SH-1011



### THREE FUNCTION ELECTRIC ICU BED

#### STD. configuration :-

- Advanced medical motor system (3 pcs. motor, 1 pc control box, 1 pc hand set)
- 60 mm x 30 mm CRCA tubular frame work
- Four section perforated CRCA sheet top
- ABS/ Polymer moulded head and foot board with buffer on four corner

#### Optional Accessories :-

- 1) Four section PU foam mattress
- 2) Food table
- 3) Central locking wheel set
- 4) Luxurious ABS/ polymer side railings (Set of four)

- Pair of collapsible side railings
- Four heavy duty swivel castors of 125 mm diameter (Diagonal wheels with brake)
- Pretreated and epoxy powder coated
- Urine bag holder
- Stainless steel telescopic saline attachment
- Patient handset

#### Overall Size :-

2140 mm L x 960 mm W x Height adjustable from 560 mm to 760 mm



SH-1020

## FOUR FUNCTION MANUAL ICU BED

### STD. configuration :-

- 60 mm x 30 mm CRCA tubular frame work
- Four section perforated CRCA sheet top
- Backrest, knee rest, trendelenburg-reverse trendelenburg and height adjustment operated by screw mechanism
- ABS/ Polymer moulded head and foot board
- A pair of new design collapsible side railings
- Four heavy duty swivel castors of 125 mm diameter (Diagonal wheels with brake)
- Pretreated and epoxy powder coated
- Urine bag holder
- Telescopic saline attachment

### Optional Accessories :-

- 1) Luxurious four-fold ABS guiderails
- 2) Four section PU foam mattress
- 3) Food table
- 4) Stainless steel bows and side railings
- 5) File holder

### Overall Size :-

2200 mm L x 990 mm W x Height adjustable from 570 mm to 860 mm



SH-1021

## THREE FUNCTION MANUAL ICU BED

### STD. configuration :-

- 60 mm x 30 mm CRCA tubular frame work
- Four section perforated CRCA sheet top
- Backrest, knee rest, trendelenburg and reverse trendelenburg operated by screw mechanism
- ABS/ Polymer moulded head and foot board with buffer on four corners
- A pair of new designed collapsible side railings
- Four heavy duty swivel castors of 125 mm diameter (Diagonal wheels with brake)
- Pretreated and epoxy powder coated
- Urine bag holder
- Telescopic saline attachment

### Optional Accessories :-

- 1) Luxurious four fold PP guiderails
- 2) Four section PU foam mattress
- 3) Food table
- 4) Stainless steel bows and side railings
- 5) File holder

### Overall Size :-

2200 mm L x 960 mm W x 610 mm H



SH-2010

**FOWLER BED-DELUXE**

Overall size :- 2090 mm L x 920 mm W x 580 mm H

- Pretreated and epoxy powder coated
- CRCA steel bed with two Lead screw fowler positions
- Backrest, knee rest operated by Screw
- Two locations for I.V. rod
- Urine bag holder
- Sizes available as per users need



SH-2011

**SEMI FOWLER BED STANDARD**

Overall size :- 1880 mm L x 830 mm W x 570 mm H

- Pretreated and epoxy powder coated
- CRCA steel bed with backrest adjustable on a lead screw
- Backrest operated by screw
- Two locations for I.V. rod
- Urine bag holder
- Sizes available as per users need



SH-2012

**SIMPLE BED WITH MANUAL BACKREST**

Overall Size :- 1880 mm L x 830 mm W x 570 mm H

- Pretreated and epoxy powder coated
- CRCA steel bed with backrest adjustable on ratchet
- Two locations for I.V. rod
- Urine bag holder
- Sizes available as per users need



SH-2013

**PLAIN HOSPITAL BED**

Overall Size :- 1880 mm L x 830 mm W x 570 mm H

- Pretreated and epoxy powder coated
- CRCA steel bed
- Two locations for I.V. rod
- Urine bag holder
- Sizes available as per users need



SH-2014

**STANDARD MATERNITY BED**

Overall size :- 1880 mm L x 830 mm W x 570 mm H

- Pretreated and epoxy powder coated
- Baby cradle attachment
- Two locations for I.V. rod
- Urine bag holder

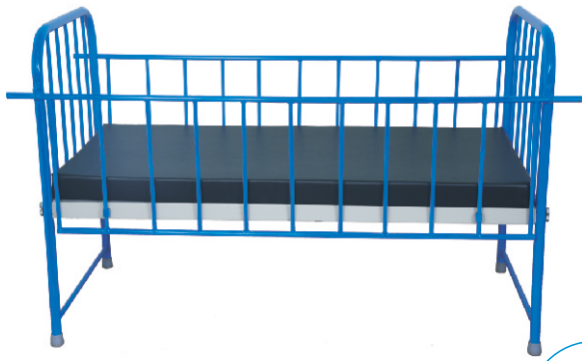


SH-2015

**BABY CRADLE TROLLEY**

Overall size :- 810 mm L x 610 mm W x 865 mm H

- Cradle Size :- 660 mm L x 410 mm W x 250 mm H
- Pretreated and epoxy powder coated
  - CRCA steel trolley with baby cradle
  - 50 mm diameter wheels



SH-2016

### PAEDIATRIC BED

Overall size :- 1575 mm L x 860 mm W x 570 mm H

- Pretreated and epoxy powder coated
- CRCA steel compact bed
- Full length drop side railings



SH-2020

### ATTENDANT BED CUM CHAIR

Overall size :- 810 mm to 1900 mm L x 685 mm W x 965 mm to 610 mm H

- Pretreated and epoxy powder coated
- CRCA steel with fine artificial leather and foam



SH-2021

### STANDARD ATTENDANT/RELATIVE BED

Overall size :- 1830 mm L x 620 mm W x 460 mm H

- Pretreated and epoxy powder coated
- CRCA steel compact bed



SH-2022

### BUNK BED

Overall size :- 1875 mm L x 760 mm W x 1650 mm H

- Pretreated and epoxy powder coated
- CRCA steel bed structure: Two or Three tier
- 32 mm diameter/ 30 mm square legs with ladder



SH-2030

### BED SIDE LOCKER (DELUXE)

Size :- 450 mm L x 450 mm W x 860 mm H

- Pretreated and epoxy powder coated
- CRCA steel unit
- Drawer, cabinet & stainless steel top
- 50 mm diameter wheels



SH-2031

### BEDSIDE LOCKERS (ABS)

Size :- 450 mm L x 410 mm W x 740 mm H

- ABS/ Polymer molded unit
- Tray, drawer & cabinet



SH-2032

### BED SIDE LOCKER (STANDARD)

Overall size :- 400 mm L x 350 mm W x 760 mm H

- Pretreated and epoxy powder coated
- CRCA steel unit with a cabinet & stainless steel top



SH-2033

### BEDSIDE TABLE

Overall size :- 460 mm L x 330 mm W x 860 mm H

- Complete stainless steel structure
- Available in two or three shelves, with or without wheels



SH-2034

### BEDSIDE DRUG TROLLEY

Overall size :- 580 mm L x 360 mm W x 660 mm H

- Pretreated and epoxy powder coated with stainless steel top
- Available in complete stainless steel with three/ four shelves
- 50 mm diameter wheels



SH-2040

### CRASH CART

Overall size :- 760 mm L x 380 mm W x 1500 mm H

- Available in stainless steel / powder coated frame with stainless steel top
- Seven drawer modular system
- Detachable plastic bins
- Oxygen cylinder stand attachment
- Top tray for monitor and pulse oxy-meter
- Stainless steel I.V. rod
- 100 mm diameter Diagonal wheels with brake



SH-2041

### EMERGENCY DRUG TROLLEY

Overall size: - 660 mm L x 460 mm W x 1470 mm H

- Pretreated and epoxy powder coated trolley with two shelves
- 25/30 medicine containers and attached file holder
- 100 mm diameter Diagonal wheels with brake



SH-2042

### MONITOR TROLLEY

Overall size: - 660 mm L x 560 mm x 1370 mm H  
Shelves size: - 610 mm x 510mm

- Available in stainless steel and powder coated
- Three to four height adjustable shelves with two shelves fixed
- Mounted on 100 mm diameter castors (Diagonal wheels with brake)
- Drawer and board attachment
- Four point electric panel with socket and switch

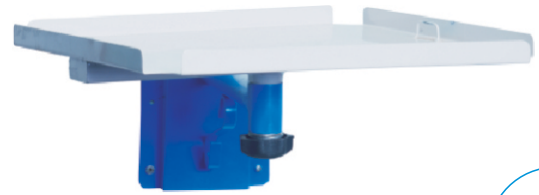


SH-2043

### ECG MACHINE TROLLEY

Overall size: - 380 mm L x 460 mm W x 915 mm H

- Complete stainless steel trolley with three trays
- cable hanger on both sides & gel bottle holder
- 50 mm diameter wheels



SH-2044

### MONITOR STAND

Overall size: - 380 mm L x 320 mm W

- Wall mounted with Movable tray
- Pretreated and epoxy powder coated



SH-2045

### SYRINGE PUMP STAND

- 25 mm diameter tubular CRCA structure
- Complete stainless steel stand
- Four tray with adjustable height attachment
- Equipped with four socket extension board and saline rod
- 1700 mm fixed height



SH-2046

### INSTRUMENT TROLLEY

Overall size: - 710 mm L x 460 mm W x 810 mm H

- Stainless steel trolley with two shelves
- three side railings
- 100 mm diameter Diagonal wheels with brake



SH-2047

### DRESSING TROLLEY WITH BOWL-BUCKET

Overall size :-  
710 mm L x 460 mm W x 810 mm H

- Stainless steel trolley with two shelves
- three side railings
- bowl of 320 mm diameter & bucket of 210 mm diameter
- 100 mm diameter Diagonal wheels with brake



SH-2048

### MAYO'S TROLLEY

Tray size: 410 mm x 560 mm

- Available in complete stainless steel/powder coated frame with stainless steel tray
- Height adjustment from 890 mm to 1400 mm
- 50 mm diameter wheels



SH-2049

**MAYO'S TROLLEY (DOUBLE PILLAR)**

Tray size: 710 mm L x 460 mm W

- Available in complete stainless steel/powder coated frame with stainless steel tray
- Height adjustment from 890 mm to 1400 mm
- 50 mm diameter wheels



SH-2050

**CARDIAC ICU TABLE**

Overall size: - 965 mm L x 430 mm W x 970 mm H

- Pretreated and epoxy powder coated trolley
- ABS/ Polymer molded top
- Height adjustable from 970 mm to 1180 mm
- 50 mm diameter wheels



SH-2051

**OVER BED TROLLEY**

Overall size :- 1170 mm L x 410 mm W x 965 mm H

Tray size :- 810 mm x 410 mm

- Pretreated and epoxy powder coated trolley with stainless steel top
- 50 mm diameter wheels



SH-2052

**OVER BED TABLE**

Overall size :- 700 mm L x 340 mm W x 310 mm

- Complete stainless steel table
- Glass holding arrangement



SH-2053

**OXYGEN CYLINDER TROLLEY (PUSH TYPE)**

Overall size: - 200 mm L x 200 mm W x 1170 mm H

- Pretreated and epoxy powder coated trolley
- 100 mm diameter wheels



SH-2054

**OXYGEN CYLINDER TROLLEY (ROUND)**

Overall size: - 380 mm L x 380 mm W x 635 mm H

- Pretreated and epoxy powder coated trolley
- 50 mm diameter wheels



SH-2055

## JUMBO OXYGEN CYLINDER TROLLEY

Overall size :- 300 mm L x 300 mm W x 1525 mm H

- Pretreated and epoxy powder coated
- 200 mm diameter front wheels
- 125 mm diameter support wheels



SH-2060

## EMERGENCY RECOVERY TROLLEY

### STD. configuration :-

- Pretreated and epoxy powder Coated Frame
- Height adjustment and trendelenburg /reverse trendelenburg position by screw and lever mechanism
- Oxygen cylinder cage
- I.V. rod
- Stainless steel swing away type side railings
- Four heavy duty swivel castors of 125 mm diameter (Diagonal wheels with brake)
- Buffers at four corners
- X-Ray cassette Tray under stretcher top

### Optional accessories :-

- Hydraulic height adjustment
- Pneumatic trendelenburg /reverse trendelenburg position

Overall size :- 2130 mm L x 610 mm W x Height Adj. from 760 mm to 1020 mm



SH-2061

## STRETCHER ON TROLLEY

Overall size :- 2080 mm L x 610 mm W x 840 mm H

- Pretreated and epoxy powder coated base frame with removable top,
- available in stainless steel top & complete stainless steel
- 100 mm diameter Diagonal wheels with brake

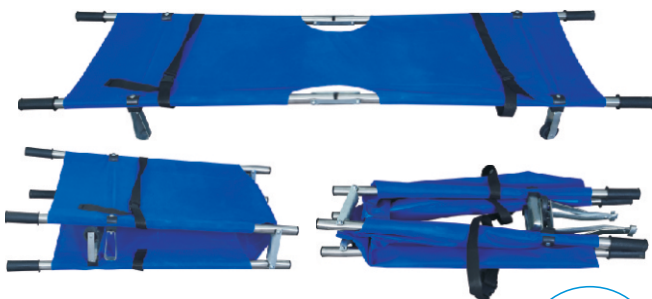


SH-2062

## STRETCHER TROLLEY-FOLDING

Overall size :- 1840 mm L x 570 mm W x 800 mm H  
Folding approx. size :- 1000 mm L x 510 mm W x 760 mm H

- Pretreated and epoxy powder coated, both side folding top fixed on CRCA tubular frame
- available in stainless steel top & complete stainless steel
- 100 mm diameter Diagonal wheels with brake



SH-2063

## FOLDING STRETCHER (TWO FOLD)

Overall size :- 2010 mm L x 530 mm W x 150 mm H

- Stainless steel tubular structure having 1700 mm length rexine cloth
- two fold stretcher easy to carry



SH-2064

## CANVAS STRECHER

Overall size :- 2040 mm L x 610 mm W

- Pretreated and epoxy powder coated CRCA tubular structure
- 1790 mm length cloth with lifting belts, Removable pipes





SH-2065

**ROLLER SHIFTER**

**Overall size: -660 mm L x 420 mm W**

- Aluminum structure with four rolling shafts & heavy duty bearing on both sides
- having washable rexine cover



SH-2070

**EXAMINATION COUCH**

**Overall size: - 1830 mm L x 610 mm W x 810 mm H**

- Frame of CRCA square tubes, CRCA sheet cabinets and drawers
- Pretreated and epoxy powder coated
- Four cabinets, three drawer and B.P. apparatus platform
- 75 mm thick mattress
- Step stool



SH-2071

**GYNAEC EXAMINATION COUCH**

**Overall size: - 1830 mm L x 610 mm W x 810 mm H**

- Frame of CRCA square tubes, CRCA sheet cabinets and drawers
- Pretreated and epoxy powder coated
- Four cabinets, three drawer and B.P. apparatus platform
- 75 mm thick mattress
- Step stool
- Pair of lithotomic bars with belt



SH-2072

**HALF CLOSED EXAMINATION COUCH**

**Overall size: - 1830 mm L x 610 mm W x 810 mm H**

- Frame of CRCA square tubes, CRCA sheet cabinets and drawers
- Pretreated and epoxy powder coated
- Two cabinets, one drawer and B.P. apparatus platform
- 75 mm thick mattress
- Step stool



SH-2073

**HALF CLOSED EXAMINATION COUCH-GYNAEC**

**Overall size: - 1830 mm L x 610 mm W x 810 mm H**

- Frame of CRCA square tubes, CRCA sheet cabinets and drawers
- Pretreated and epoxy powder coated
- Gynaec cut and pair of lithotomic bars with belt
- Two cabinets, one drawer and B.P. apparatus platform
- 75 mm thick mattress
- Step stool



SH-2074

**PLAIN EXAMINATION TABLE**

**Overall size: - 1830 mm L x 610 mm W x 810 mm H**

- Frame of pretreated and epoxy powder coated CRCA tubes
- Top with headrest adjustable on ratchet



SH-2075

**GYNAEC PLAIN EXAMINATION TABLE**

**Overall size: - 1830 mm L x 610mm W x 810 mm H**

- Frame of pretreated and epoxy powder coated CRCA steel structure
- Headrest adjustable on ratchet, lithotomic bars with belts



SH-2076

**TANDEM WAITING CHAIR**

**Overall size: - 1830 mm L x 500mm W x 400mm H**

- Three seater
- Chrome plated
- Trendy design



SH-2081

### WAITING CHAIR-POWDER COATED

- Overall size: - 1450 mm L x 480 mm W x 460 mm H**
- Pretreated and epoxy powder coated CRCA steel
  - three seater
  - Available in Five/four/three/two/ single seater options, with or without arms



SH-2083

### REVOLVING STOOL

- Overall size :- Top 310 mm diameter with height adjustable 530 mm to 690 mm**
- Pretreated and epoxy powder coated CRCA tubular structure
  - Press bend stainless steel top
  - Available in complete stainless steel



SH-2083

### SURGEON'S STOOL

- Comfortable cushioned top with or without backrest
- Height adjustable by pneumatic spring from 480 mm to 610 mm
- 50 mm diameter wheels



SH-2084

### ALL PURPOSE STOOL

- Overall size: - 305 mm L x 305 mm W x 460 mm H**
- Pretreated and epoxy powder coated CRCA tubular framework
  - Press bend top
  - available in stainless steel top and complete stainless steel



SH-2085

### STEP STOOL (DOUBLE)

- Overall size: - 480 mm L x 410 mm W x 460 mm H**
- Pretreated and epoxy powder coated CRCA tubular framework
  - Press bend top
  - available with aluminum grip plates top



SH-2086

### STEP STOOL (SINGLE)

- Overall size: - 410 mm L x 250 mm W x 250 mm H**
- Pretreated and epoxy powder coated CRCA tubular framework
  - press bend top
  - available with aluminum grip plates top



SH-2087

### SALINE STANDS

- Overall size: - 430 mm x 430 mm base with fixed height 1270 mm adjustable up to 1930 mm**
- Pretreated and epoxy powder coated CRCA tubular structure
  - Available in heavy duty with wheels, complete stainless steel



SH-2088

### BED SIDE SCREEN

- Overall size: - 1220 mm L x 560 mm W x 1620 mm H**  
**Unfolded Size of screen: -2400 mm L**
- Pretreated and epoxy powder coated CRCA tubular structure
  - 50 mm diameter wheels



SH-2089

### KICK BUCKET

- Overall size :- 280mm H x 350mm diameter of bowl**
- Pretreated and epoxy powder coated, CRCA tubular structure
  - Stainless steel bowl of 350 mm diameter
  - 60 mm diameter three wheels



SH-2090

### BURN CAGE

- Overall size :- 1200 mm L x 600 mm W x 600 mm H**
- Pretreated and epoxy powder coated, CRCA tubular structure



SH-2091

### WHEEL CHAIR-FIXED TYPE

- Overall size :- 630 mm L x 1090 mm W x 960 mm H**  
**Seat size :- 460 mm L x 430 mm W x 460 mm H**
- CRCA tubular framework with cushion and armrest
  - 150 mm front wheels & 630 mm back wheels



SH-2092

### FOLDING WHEEL CHAIR

- Overall size :- 680 mm L x 1040 mm W x 890 mm H**  
**Seat size :- 510 mm L x 410 mm W x 460 mm H**
- Chrome plated, CRCA tubular framework with cushion and armrest
  - 200 mm front wheels & 610 mm back wheels



SH-2093

### INSTRUMENT CABINET

- Overall size :- 910 mm L x 510 mm W x 1980 mm H**
- Pretreated and oven baked spray painted
  - CRCA sheet press bended work with lockable doors of four glass made up of five fixed shelves



SH-2094

### PIGEON LOCKER

- Overall size :- 910 mm L x 450 mm W x 1980 mm H**
- Pretreated and oven baked spray painted
  - CRCA sheet press bended work with Six/Eight/Nine/Twelve/Fifteen/Eighteen lockers, as per requirement



SH-2095

### OT SCRUB SINK

- Overall size :- 760 mm L (Or as required) x 440 mm W x 910 mm H**
- Stainless steel 304 grade press bend sink (wall mounted/Stand Model)
  - optional accessories like flash guard, tray
  - Available in size as per requirement



SH-2096

### LINEN TROLLEY

- Overall size: - 540 mm diameter X 920 mm H**
- Available in complete stainless steel/ powder coated
  - 100 mm diameter three wheels



SH-3010

### HI-VAC.-MAJOR SUCTION

- Completely stainless steel cabinet mounted on castors
- Oil immersed rotary vacuum pump driven by ¼ Hp. Specially developed electrical motor, Vacuum Capacity: 760 mm/ Hg
- Gives instant vacuum with regulator to control vacuum as per requirement



SH-3011

### NOISELESS SUCTION

- Complete stainless steel cabinet mounted on castors for easy mobility,
- Exceptionally noiseless operation due to oil immersed piston pump, 1/8 Hp or 1/6 Hp compressor for energy saving,
- Fluid Containers: Two Glass Jars (1.5ltrs. Capacity Each) with cut of valve



SH-3012

### FOOT SUCTION

Overall size: -310 mm L x 240 mm W

- Powder coated/ stainless steel base mounted with vacuum gauge
- aluminum foot operated pump
- two glass jars



SH-3013

### FUMIGATOR (5 Lit)

- Stainless steel unit equipped with 1 Hp motor
- with or without timer unit
- capacity of five liter
- 50 mm three wheels



SH-3014

### AUTOCLAVE (SINGLE DRUM)

- Heavy duty stainless steel 304 grade unit with pressure gauge and release valve
- equipped with 1 kW heating coil
- long lasting silicon gaskets



SH-3015

### AUTOCLAVE (DOUBLE, 2.5 DRUMS)

Overall size :- 300 mm D x 750 mm H

- Heavy duty stainless steel 304 grade unit with pressure gauge and release valve
- Equipped with 2 kW heating coil
- Long lasting silicon gaskets.
- Available in 2.5 drum capacity



SH-3016

### AUOCLAVE (DOUBLE DRUM, DOUBLE CHAMBER)

- Microcontroller based (Automatic)
- Complete stainless steel body
- Double walled stainless steel autoclave
- Equipped with replaceable heater & gasket, Dial gauge to know the pressure, water level indicator to know water level, pressure release valve at top and bottom, water inlet and outlet valve, Digital indication of temperature and timer
- Available in Semi-automatic, manual model



SH-3017

### ELECTRIC OPERATION TABLE (C-ARM COMPATIBLE)

#### Features

- Overall size :- 1950 mm L x 680 mm W, Height Adjustable from 780 mm to 1080 mm
- Standard accessories :- Anesthetic screen, padded side supports, Intravenous Arm board, padded Shoulder Supports, five section mattress
- Trendlenburg / Reverse-40 degree, Flex/Reflex- 80 degree/220 degree, Side Tilt-22 degree
- Kidney Section-125mm Manually, Leg Plate-90 degree down
- All movements with 5 function electrical actuators
- Also Available in Semi electrical model ( Only height adjustment actuators)



SH-3021

### HYDRAULIC OPERATION TABLE (WITH ORTHOPEDIC ATTACHMENT)

**Overall size: 1950 mm L x 680 mm W, Height Adjustable from 750 mm to 1000 mm**

**Standard accessories :-** Anesthetic screen, padded side supports, Intravenous Arm board, padded Shoulder Supports, five section mattress

- Orthopedic attachments: Pelvic rest, pelvic support(Radio-translucent),inner thigh support(Radio-translucent), Foot plate with ortho-shoes, tibia attachment and hand surgery board
- Height adjustment with hydraulic pump, other movements with heavy duty lead screws
- Also convertible to Gynac/General surgery table



SH-3022

### HYDRAULIC OPERATION TABLE (DELUXE)

**Overall size: 1950 mm L x 580 mm W, Height Adjustable from 780 mm to 1000 mm**

**Standard accessories :-** Anesthetic screen, padded side supports, Intravenous Arm board, padded Shoulder Supports, Lithotomic Leg holder with straps, five section mattress

- Height adjustment with hydraulic pump, other movements with heavy duty lead screws.



SH-3023

### HEIGHT ADJUSTABLE OPERATION TABLE

**Overall size: - 1830 mm L x 540mmW x 660mm to 910 mm H**

- Complete stainless steel structure
- Removable and folding foot end
- Lithotomic bars with belts
- T/RT position by screw and lever mechanism



SH-3024

### SIMPLE OPERATION TABLE

**Overall size: - 1830 mm L x 580 mm W x 760 mm H**

- Stainless steel top, powder coated structure
- Removable and folding foot end
- Lithotomic bars with stirrups and arm boards
- T/RT position by screw and lever mechanism



SH-3025

### LABOUR TABLE (FOOT END FOLDING)

**Overall size: - 1830 mm L x 710 mm W x 760 mm H**

- Complete stainless steel unit
- three section top with removable and folding foot end
- T/RT position by screw mechanism
- Middle section have perinal U cut with drainage bowl
- available in epoxy powder coated with stainless steel top
- Gives instant vacuum with regulator to control vacuum as per requirement



SH-3026

### TELESCOPIC LABOUR TABLE

**Overall size: - 1900 mm L x 840 mm W x 760 mm H**

- Three section stainless steel top and Base
- Backrest on ratchet
- Hand grips on both side
- Middle section having perinal U cut with bowl
- Trendlenburg/reverse trendlenburg position by screw mechanism
- Sliding foot end with removable railings on three sides (stainless steel)



**LED OPERATION THEATOR LIGHT (3 Petal)**

SH-3030



**LED OPERATION THEATOR LIGHT (4+3 Petal)**

SH-3031

**Technical Data (For Models Si 3030, 3031)**

	<b>Four Dome</b>	<b>Three Dome</b>
Max light intensity at 1m (Lux) :-	120,000	90,000
Number of LED's :-	76 57	
LED's lifetime :-	>40,000	>40,000
Dome diameter :-	580 mm	580 mm
Color rendering index :-	>96	>96
Color temperature :-	3500-6200 K	3500-6200 K
Control on dome :-	Digital	Digital
Light field diameter :-	150 mm or more	150 mm or more



**MOBILE LED EXAMINATION LIGHT (SINGLE LED)**

SH-3040



**MULTIPLE LED WITH INTENSITY CONTROL & MAGNIFYING LENS**

SH-3041

**Stainless steel base with wheels**

**Technical Data**

Height :-	1.1m to 1.2 m
Voltage :-	AC 180-265 v
Color temperature :-	6000 k
Life expectancy :-	30000 h

**Stainless steel base with wheels**

**Technical Data**

Lens material :-	Acrylic
Voltage :-	AC 180-260 v
Current :-	300 MA/W
Color temperature :-	2800-6500 k
Beam angle	5 degree
Light intensity :-	2200 LM

**- OUR OTHER PRODUCTS -**

- BACKREST
- WASH BASIN STAND (SINGLE/ DOUBLE)
- CSSD RACKS, DIFFERENT TYPES OF MATERIAL CARRYING TROLLEYS
- ANESTHESIA APPARATUS
- CAUTERY (BIPOLAR, SOLID STATE)
- BLOOD COLLECTION CHAIRS